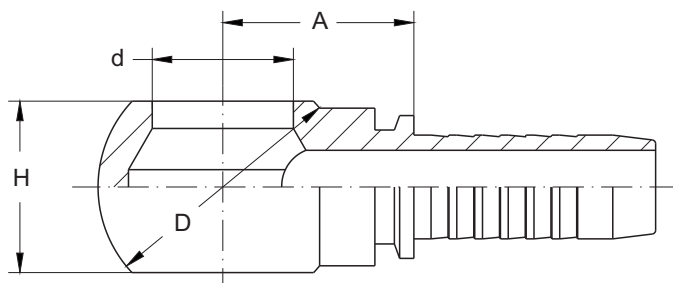


BANJO FITTING AND BOLT FOR HOSE/PIPE OF BRAKE OR FUEL LINE

铰接接头 Banjo Hose Fitting DIN 7642 standard



公制铰接体
METRIC BANJO
DIN 7642

70011

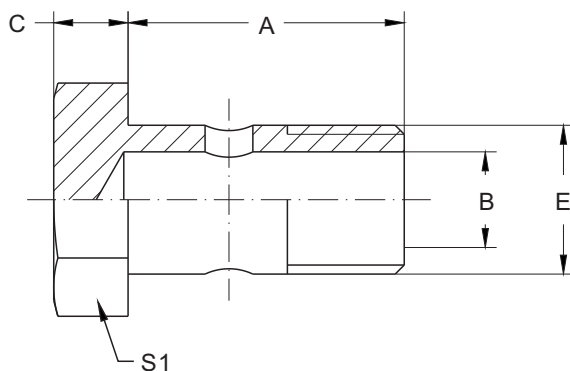
型 号 PART NO.	螺栓 (BOLT)	软管 HOSE BORE		尺寸 DIMENSIONS			
		公称内径 DN	标号 DASH	A	d	D	H
70011-10-03	M10x1	5	03	14.5	10.1	17	10
70011-10-04	M10x1	6	04	17	10.1	17	10
70011-12-04	M12x1.5	6	04	20.5	12.1	20	12
70011-12-05	M12x1.5	8	05	20.5	12.1	20	12
70011-12-06	M12x1.5	10	06	20.5	12.1	20	12
70011-14-04	M14x1.5	6	04	19	14.1	24	14
70011-14-05	M14x1.5	8	05	19	14.1	24	14
70011-14-06	M14x1.5	10	06	21	14.1	24	14
70011-16-04	M16x1.5	6	04	20.5	16.1	28	16
70011-16-05	M16x1.5	8	05	20.5	16.1	28	16
70011-16-06	M16x1.5	10	06	20.5	16.1	28	16
70011-18-04	M18x1.5	6	04	23	18.1	32	20
70011-18-05	M18x1.5	8	05	24	18.1	32	20
70011-18-06	M18x1.5	10	06	24	18.1	32	20
70011-18-08	M18x1.5	12	08	24.5	18.1	32	20
70011-22-06	M22x1.5	10	06	28.1	22.1	39	25
70011-22-08	M22x1.5	12	08	28.5	22.1	39	25
70011-22-10	M22x1.5	16	10	27.5	22.1	39	25
70011-26-12	M26x1.5	20	12	33.5	26.1	46	30
70011-30-16	M30x1.5	25	16	37	30.2	54	36
70011-30-20	M30x1.5	32	20	41	30.1	54	36

注：1.表中型号用于编织软管。
Note: 1.For use with braided hoses.

2.如需用于缠绕软管型号改为 70012XX-XX。
2.If use with spiral hoses, hose fitting series number is 70012XX-XX.

BANJO FITTING AND BOLT FOR HOSE/PIPE OF BRAKE OR FUEL LINE

铰接接头 Banjo bolt with Metric thread DIN 7643 standard



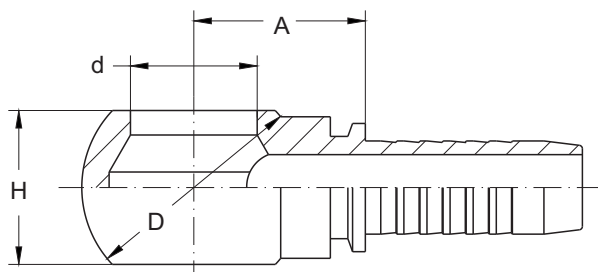
公制铰接螺栓
METRIC BOLT
DIN 7643

700M

型 号 PART NO.	螺 纹 E THREAD E	尺寸 DIMENSIONS			
		A	B	C	S1
700M-10	M10x1	19	4	6	14
700M-12	M12x1.5	24	6	6	17
700M-14	M14x1.5	26	8	7	19
700M-16	M16x1.5	28	9	7.5	22
700M-18	M18x1.5	32	11	8	24
700M-22	M22x1.5	39	14	9	27
700M-26	M26x1.5	45	18	10	32
700M-30	M30x1.5	51	22	11	38

BANJO FITTING AND BOLT FOR HOSE/PIPE OF BRAKE OR FUEL LINE

铰接接头 Banjo Hose Fitting for BSPP bolt



英制铰接体
BSPP BANJO

72011

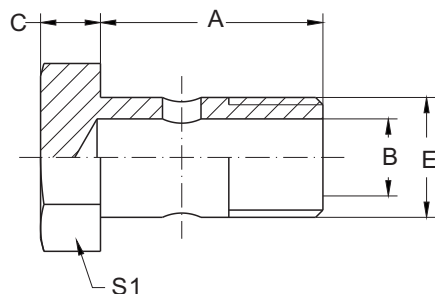
型 号 PART NO.	螺 纹 E THREAD E	软管 HOSE BORE		尺寸 DIMENSIONS			
		公称内径 DN	标号 DASH	A	d	D	H
72011-02-03	G1/8x28	5	03	18	9.9	24	16
72011-02-04	G1/8x28	6	04	18.5	9.9	24	16
72011-04-03	G1/4x19	5	03	19	13.3	24	15
72011-04-04	G1/4x19	6	04	19.5	13.3	24	15
72011-04-05	G1/4x19	8	05	19.5	13.3	24	15
72011-04-06	G1/4x19	10	06	19.5	13.3	24	15
72011-06-04	G3/8x19	6	04	22	16.7	29	20
72011-06-05	G3/8x19	8	05	22.5	16.7	29	20
72011-06-06	G3/8x19	10	06	22.5	16.7	29	20
72011-06-08	G3/8x19	12	08	23	16.7	29	20
72011-08-05	G1/2x14	8	05	27.5	21	38	25
72011-08-06	G1/2x14	10	06	27.5	21	38	25
72011-08-08	G1/2x14	12	08	28	21	38	25
72011-08-10	G1/2x14	16	10	28.5	21	38	25
72011-10-10	G5/8x14	16	10	30	23	40	27
72011-12-10	G3/4x14	16	10	31.5	26.5	48	31
72011-12-12	G3/4x14	20	12	32	26.5	48	31
72011-16-08	G1x11	12	08	40	33.3	60	42
72011-16-12	G1x11	20	12	40	33.3	60	42
72011-16-16	G1x11	25	16	41	33.3	60	42

注：1.表中型号用于编织软管。
Note: 1.For use with braided hoses.

2.如需用于缠绕软管型号改为 72012XX-XX。
2.If use with spiral hoses,hose fitting series number is 72012XX-XX.

BANJO FITTING AND BOLT FOR HOSE/PIPE OF BRAKE OR FUEL LINE

铰接接头 Banjo Bolt with BSPP thread



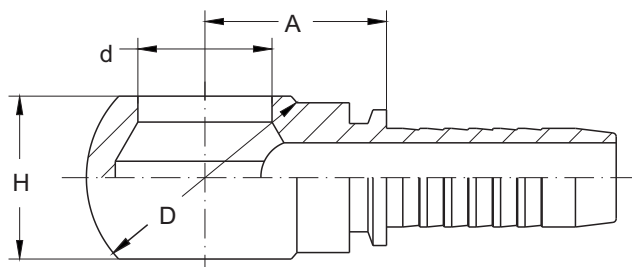
英制铰接螺栓
BSPP BOLT

720B

型 号 PART NO.	螺 纹 E THREAD E	尺寸 DIMENSIONS			
		A	B	C	S1
720B-02	G1/8x28	29.5	4.8	4.8	14
720B-04	G1/4x19	28.5	6	6	19
720B-06	G3/8x19	38.5	9	7	22
720B-08	G1/2x14	44	13	8.5	27
720B-10	G5/8x14	48.5	15	10	30
720B-12	G3/4x14	56	18	10	32
720B-16	G1x11	68.5	22	13	41

BANJO FITTING AND BOLT FOR HOSE/PIPE OF BRAKE OR FUEL LINE

铰接接头 Banjo Hose Fitting JB standard in China



部标公制铰接体
JB METRIC BANJO

71011

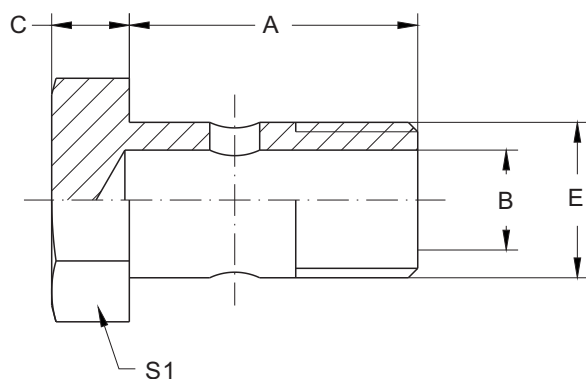
型 号 PART NO.	螺栓 (BOLT)	软管 HOSE BORE		尺寸 DIMENSIONS			
		公称内径 DN	标号 DASH	A	d	D	H
71011-06-04	M6x1	6	04	16	6	18	12
71011-08-04	M8x1	6	04	17	8	20	13
71011-10-04	M10x1	6	04	19	10	22	13
71011-10-05	M10x1	8	05	19	10	22	13
71011-10-06	M10x1	10	06	19	10	22	13
71011-12-06	M12x1.5	10	06	21	12	26	15
71011-14-04	M14x1.5	6	04	20.5	14	28	18
71011-14-05	M14x1.5	8	05	21.5	14	28	18
71011-14-06	M14x1.5	10	06	21.5	14	28	18
71011-14-08	M14x1.5	12	08	22.5	14	28	18
71011-16-05	M16x1.5	8	05	22.5	16	32	18
71011-16-08	M16x1.5	12	08	25	16	32	18
71011-18-06	M18x1.5	10	06	26.5	18	36	22
71011-18-08	M18x1.5	12	08	27	18	36	22
71011-18-10	M18x1.5	16	10	27.5	18	36	22
71011-20-06	M20x1.5	10	06	29.5	20	36	22
71011-20-08	M20x1.5	12	08	30	20	36	22
71011-22-10	M22x1.5	16	10	30.5	22	46	30
71011-22-12	M22x1.5	20	12	32	22	46	30
71011-27-10	M27x2	16	10	36.5	27	56	36
71011-27-14	M27x2	22	14	36	27	56	36
71011-27-16	M27x2	25	16	36	27	56	36
71011-33-12	M33x2	20	12	43	33	64	50
71011-42-20	M42x2	32	20	54	42	78	64

注：1.表中型号用于编织软管。
Note: 1.For use with braided hoses.

2.如需用于缠绕软管型号改为 71012-XX-XX。
2.If use with spiral hoses,hose fitting series number is 71012-XX-XX .

BANJO FITTING AND BOLT FOR HOSE/PIPE OF BRAKE OR FUEL LINE

铰接接头 Banjo Bolt with Metric thread JB standard in China



部标公制铰接螺栓
JB METRIC BANJO

710M

型 号 PART NO.	螺 纹 E THREAD E	尺寸 DIMENSIONS			
		A	B	C	S1
710M-10	M10x1	25	4	6	17
710M-14	M14x1.5	32	8	7	19
710M-18	M18x1.5	38	11	8	24
710M-22	M22x1.5	48	14	9	30
710M-27	M27x2	60	18	10	36
710M-33	M33x2	63	22	12	41
710M-42	M42x2	85	28	14	55